



419300 WOMEN'S BLEND WOMEN'S 1/4 ZIP

- Badger heat seal logo on left sleeve
- Badger Sport paneled shoulder for maximum movement
- Double-needle hem
- 100% Sublimated Polyester moisture management/antimicrobial fabric
- Thumbholes in sleeves
- Self-fabric collar with 8" locking zipper

COLORS

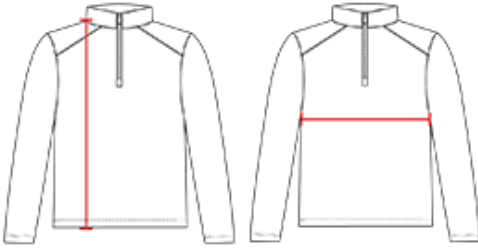


SPECIFICATIONS

	XS	S	M	L	XL	2XL
Piece Weight measured in pounds	0.36	0.36	0.36	0.36	0.36	0.36
Spec Body Length measured in inches	26	27	28	29	30	31
Spec Chest Width measured in inches	16	17.5	19	21	23	25
Case Count # of units per case	36	36	36	36	36	36

HOW TO MEASURE

These product specifications reference a product's measurements.
For sizing information and guidance, please reference our sizing charts.



BODY LENGTH

Measured on the front from the shoulder/neck intersection to the bottom of the garment.

CHEST WIDTH

Measured across the chest, 1" below the armhole seam.