



# # 428600 WOMEN'S 1/4 ZIP WOMEN'S SLIGHTWEIGHT PULLOVER

- Badger Sport paneled shoulder for maximum movement
- 94% Polyester / 6% Spandex moisture management/antimicrobial performance fabric
- Paneled sleeve w/ thumbhole
- Embroidered Badger logo on left sleeve
- Self-fabric collar with 8" locking zipper

## COLORS

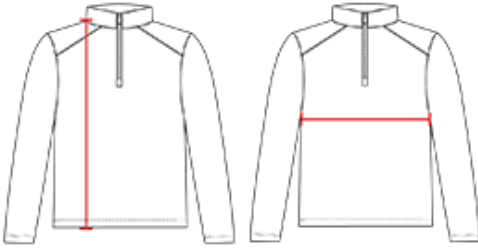


## SPECIFICATIONS

	XS	S	M	L	XL	2XL
<b>Piece Weight</b> measured in pounds	0.36	0.36	0.36	0.36	0.36	0.36
<b>Spec Body Length</b> measured in inches	23	24	25	26	27	28
<b>Spec Chest Width</b> measured in inches	13	15	17	19	21	23
<b>Case Count</b> # of units per case	36	36	36	36	36	36

## HOW TO MEASURE

These product specifications reference a product's measurements.  
For sizing information and guidance, please reference our sizing charts.



**BODY LENGTH**

Measured on the front from the shoulder/neck intersection to the bottom of the garment.

**CHEST WIDTH**

Measured across the chest, 1" below the armhole seam.