



# # 466600 WOMEN'S PRO-COMPRESSION WOMEN'S RACERBACK

- Racerback with room to print
- Stretch body mt
- Double-needle hem
- Badger heat seal logo on back
- Self-fabric binding neck and armhole
- 90% Polyester/10% Spandex moisture management fabric

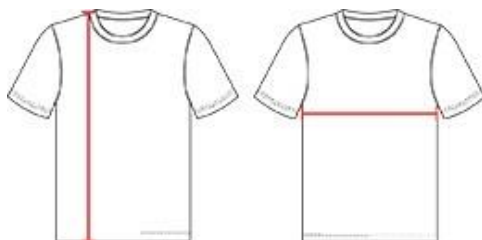
## COLORS



## SPECIFICATIONS

	XS	S	M	L	XL	2XL
<b>Piece Weight</b> measured in pounds	0.36	0.36	0.36	0.36	0.36	0.36
<b>Spec Body Length</b> measured in inches	22	23	24	25	26	27
<b>Spec Chest Width</b> measured in inches	13 ½	14 ½	15 ½	16 ½	17 ½	18 ½
<b>Case Count</b> # of units per case	36	36	36	36	36	36

## HOW TO MEASURE



These product specifications reference a product's measurements. For sizing information and guidance, please reference our sizing charts.

### BODY LENGTH

Measured on the front from the shoulder/neck intersection to the bottom of the garment.

### CHEST WIDTH

Measured across the chest, 1" below the armhole seam.