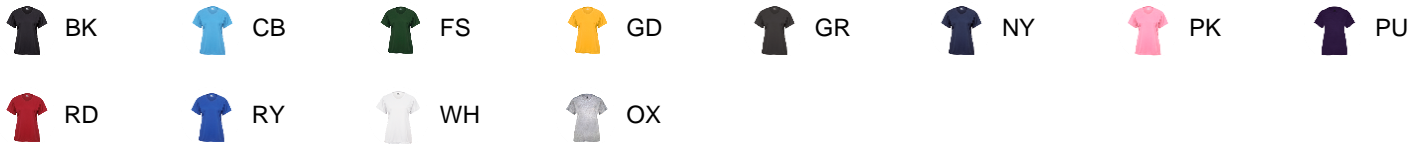




#486000 WOMEN'S B-TECHWOMEN'STEE

- Badger heat seal logo on left sleeve
- Badger Sport paneled shoulder for maximum movement
- Double-needle hem
- Soft cotton-like feel for comfort
- 94% Polyester/6% Spandex moisture management/antimicrobial performance fabric

COLORS

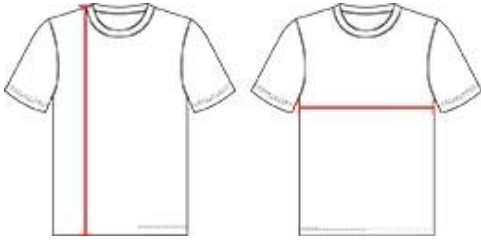


SPECIFICATIONS

	XS	S	M	L	XL	2XL
Piece Weight measured in pounds	0.36	0.36	0.36	0.36	0.36	0.36
Spec Body Length measured in inches	25	26	27	28	29	30
Spec Chest Width measured in inches	15	17	19	21	23	25
Case Count # of units per case	36	36	36	36	36	36

HOWTOMEASURE

These product specifications reference a product's measurements.
For sizing information and guidance, please reference our sizing charts.



BODY LENGTH

Measured on the front from the shoulder/neck intersection to the bottom of the garment.

CHEST WIDTH

Measured across the chest, 1" below the armhole seam.