



510400 MEN'S C2L/STEE

- Self-fabric collar
- 100% Polyester moisture management/antimicrobial performance fabric
- Double-needle hem

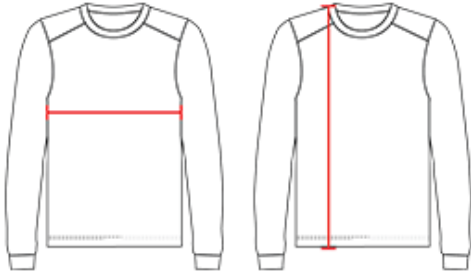
COLORS



SPECIFICATIONS

	S	M	L	XL	2XL	3XL	4XL
Piece Weight measured in pounds	0.30	0.30	0.30	0.30	0.30	0.30	0.30
Spec Body Length measured in inches	27 1/2	28 1/2	29 1/2	30 1/2	31 1/2	32 1/2	32 1/2
Spec Chest Width measured in inches	18	20	22	24	26	28	28
Case Count # of units per case	72	72	72	72	72	36	36

HOW TO MEASURE



These product specifications reference a product's measurements. For sizing information and guidance, please reference our sizing charts.

BODY LENGTH

Measured on the front from the shoulder/neck intersection to the bottom of the garment.

CHEST WIDTH

Measured across the chest, 1" below the armhole seam.