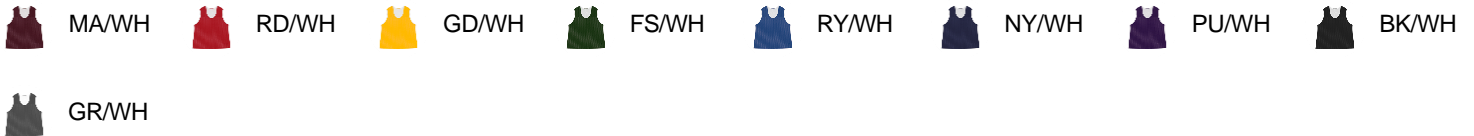




566000 WOMEN'S C2REVERSIBLEWOMEN'SMESH PINNIE

- 100% Polyester Pro Mesh Fabric
- Double layered mesh
- Fully Reversible
- Double-needle hem
- Each layer individually hemmed for easy screening

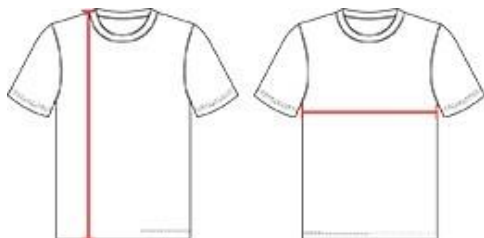
COLORS



SPECIFICATIONS

	XS	S/ M	L/XL
Piece Weight measured in pounds	0.00	0.36	0.36
Body Length Measured in inches	19	23	25
Chest Width Measured in inches	19	20	22
Case Count # of units per case	72	72	72

HOWTOMEASURE



These product specifications reference a product's measurements. For sizing information and guidance, please reference our sizing charts.

BODY LENGTH

Measured on the front from the shoulder/neck intersection to the bottom of the garment.

CHEST WIDTH

Measured across the chest, 1" below the armhole seam.