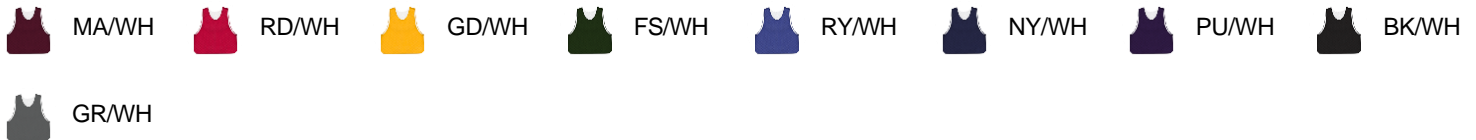




# # 576 000 MEN'S C2REVERSIBLEMESHPINNIE

- 100% Polyester Pro Mesh Fabric
- Double layered mesh
- Fully Reversible
- Double-needle hem
- Each layer individually hemmed for easy screening

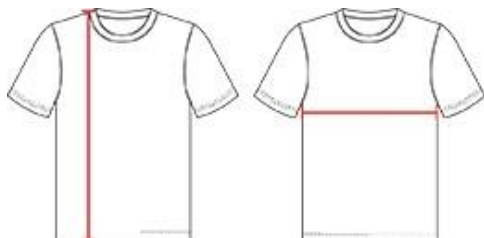
## COLORS



## SPECIFICATIONS

	S/ M	L/XL	2XL/3XL
<b>Piece Weight</b> measured in pounds	0.36	0.36	0.36
<b>Body Length</b> Measured in inches	23	25	27
<b>Chest Width</b> Measured in inches	21	25	29
<b>Case Count</b> # of units per case	72	72	36

## HOWTOMEASURE



These product specifications reference a product's measurements. For sizing information and guidance, please reference our sizing charts.

### BODY LENGTH

Measured on the front from the shoulder/neck intersection to the bottom of the garment.

### CHEST WIDTH

Measured across the chest, 1" below the armhole seam.