



# # 590200 WOMEN'S C2 WOMEN'S POLO

- 100% polyester moisture management/antimicrobial performance fabric
- Shoulder panels
- Contour silhouette
- Three button placket
- Solid knit collar
- Taped back neck
- Double-needle hem

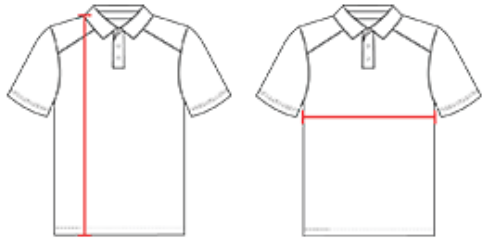
## COLORS



## SPECIFICATIONS

	XS	S	M	L	XL	2XL
<b>Piece Weight</b> measured in pounds	0.50	0.50	0.50	0.50	0.50	0.50
<b>Spec Body Length</b> measured in inches	25	26	27	28	29	30
<b>Spec Chest Width</b> measured in inches	16	17.5	19	20.5	22	23.5
<b>Case Count</b> # of units per case	72	72	72	72	72	72

## HOW TO MEASURE



These product specifications reference a product's measurements. For sizing information and guidance, please reference our sizing charts.

**BODY LENGTH**

Measured on the front from the shoulder/neck intersection to the bottom of the garment.

**CHEST WIDTH**

Measured across the chest, 1" below the armhole seam.