



#766600 WOMEN'S QUILTED WOMEN'S VEST

- 100% Padded Polyester fabric
- Quilted front and back body with smooth shoulder panels and pocket
- Wind and Water Resistant
- Self-fabric collar with full length locking zipper
- Pouch pocket on front body with headset opening
- Bungee cord and hidden toggle on left side
- Drop-tail hem
- Embroidered Badger logo on lower left front body

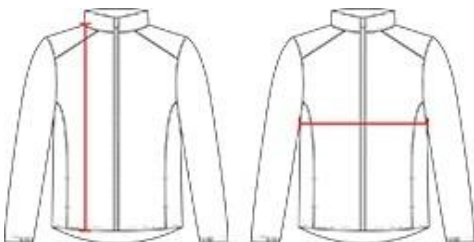
COLORS



SPECIFICATIONS

	XS	S	M	L	XL	2XL
Piece Weight measured in pounds	0.00	0.00	0.00	0.00	0.00	0.00
Body Length Measured in inches	26	26 ½	27	27 ½	28	28 ½
Chest Width Measured in inches	18	20	21	23	25	27
Case Count # of units per case	12	12	12	12	12	12

HOW TO MEASURE



These product specifications reference a product's measurements. For sizing information and guidance, please reference our sizing charts.

BODY LENGTH

Measured on the front from the shoulder/neck intersection to the bottom of the garment.

CHEST WIDTH

Measured across the chest, 1" below the armhole seam.