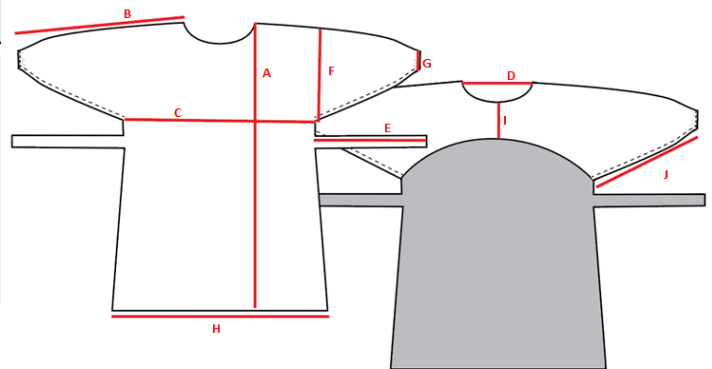


North American Made. Inventory Ready to Ship.



Part of Gown	Dimension
Gown Length (A)	42"
Arm Span (B)	31"
Gown Width (C)	27"
Neck Width (D)	8"
Tie Length (E)	24"



- Spun bond non-woven polypropylene w/ polyethylene coating; 65 GSM; white; latex free. Double-Ply construction for optimal protection and breathability.
- Gown is an Over-The-Head (OTH) neck style, featuring a standard open back, attached waist ties, and elastic sleeve ends. Replacement of the sleeve ends with thumb holes available upon request.
- Material meets AAMI/PB70 Level 2 requirements for fluid impact penetration and hydrostatic pressure, as per AATCC 42 and AATCC 127, respectively.